

Handle-shape for easier operation



Gripping Front and Main grips for easy hedge top trimming



Gripping Front and Under grips for efficient hedge side trimming

Lightweight
2.9kg* (6.4lbs)

Powerful
400W

*UH4261



Front grip
Most suitable size and roundness at whole circumference.

Main grip

Under grip

Electric brake



Anti-loosening nut
for blade fastening screw

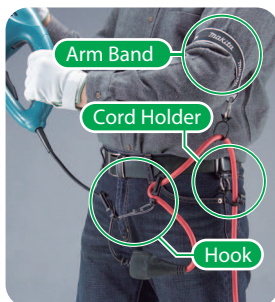


Truss head screws
on lower blade for smooth hedge trimming



Stain-free shear blade
surface of glittering silver obtained by non-electrolyzed nickel plating that features high anti-abrasion surface for long lasting coating.

Protection of extension cord from breakage



- By holding extension cord with **Cord Holder Complete Set (standard equipment)** attached on waist belt, extension cord can be prevented from dangling in front of operator.
- Using **Arm Band Complete Set (option)** with Cord holder complete set in overhead applications, extension cord can be protected from getting caught in trees or hedges.

Accessories

Arm Band Complete Set
Part No. 194679-8



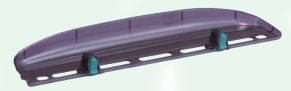
Cord Holder Complete Set
(standard equipment)
Part No. 194677-2



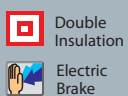
Hook Complete
(standard equipment)
Part No. 158024-1



Chip Receiver Assembly Set
Keeps branch or leaf debris from scattering around.
• One-touch installation/removal
• Attachable to either side of the blade
Part No. 195050-9



Electric Hedge Trimmer



UH5261 520mm (20-1/2") / **UH4861** 480mm (18-7/8") / **UH4261** 420mm (16-1/2")

419

	UH5261	UH4861	UH4261
Continuous rating Input	400W	400W	400W
Blade length	520mm (20-1/2")	480mm (18-7/8")	420mm (16-1/2")
Strokes per minute (spm)	1,600	1,600	1,600
Dimensions (L x W x H)	921 x 194 x 194mm (36-1/4" x 7-5/8" x 7-5/8")	871 x 194 x 194mm (34-1/4" x 7-5/8" x 7-5/8")	821 x 194 x 194mm (32-1/4" x 7-5/8" x 7-5/8")
Net weight*	3.0kg (6.7lbs)	3.0kg (6.5lbs)	2.9kg (6.4lbs)
Power supply cord	0.3m (0.98ft)	0.3m (0.98ft)	0.3m (0.98ft)

Standard Equipment Blade Cover, Hook Complete, Cord Holder Complete Set

*weight according to EPTA-Procedure 01/2003 Items of standard equipment and specifications may vary by country or area.

Makita Corporation

3-11-8 Sumiyoshi-cho, Anjo, Aichi, 446-8502 Japan

PRINTED IN JAPAN BB-AC