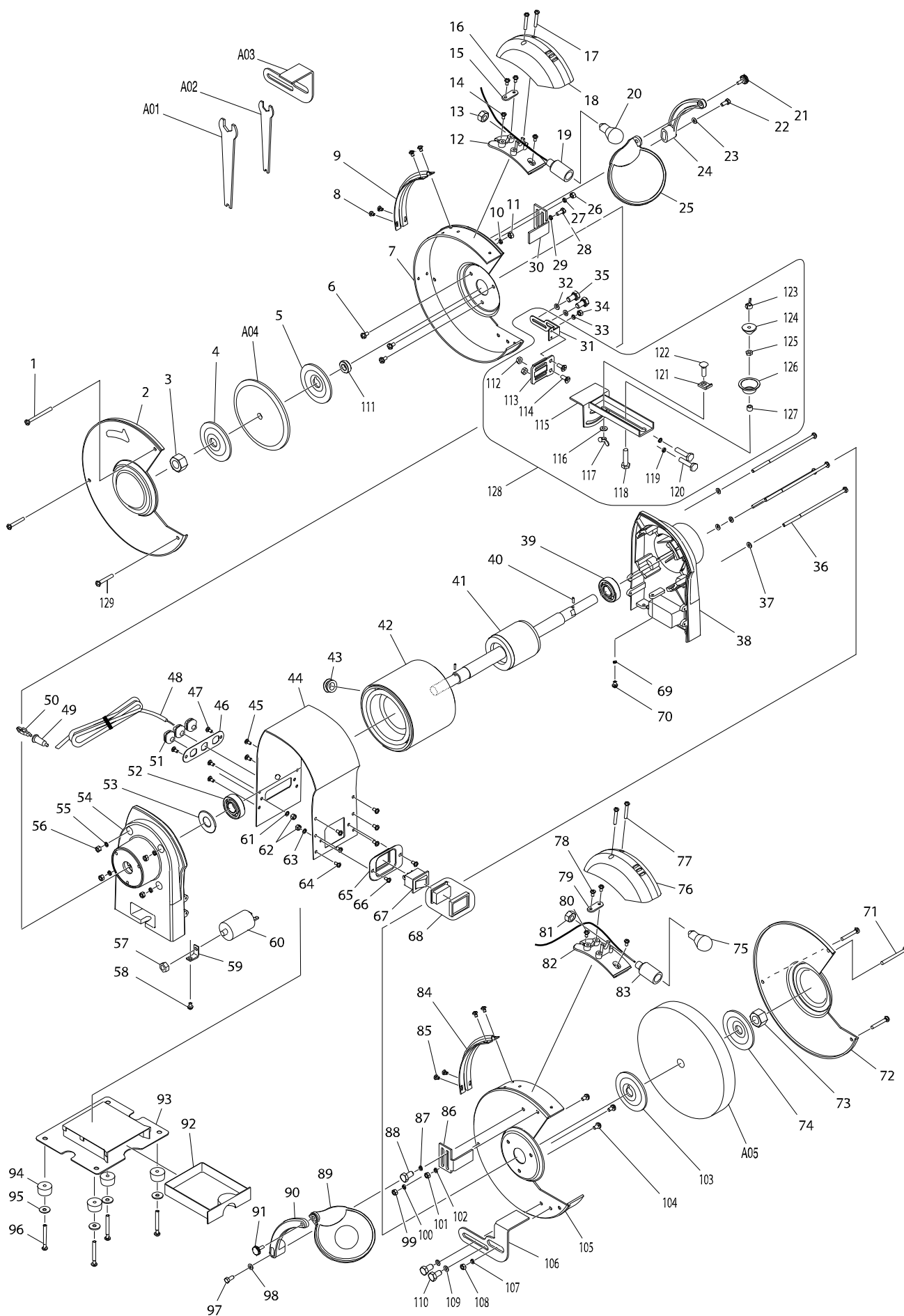


# Číslo typu GB602W BENCH GRINDER 150MM



| Položka | Číslo dílu | Popis                        | Změn | Množstv | N/O | Možnost 1 | Možnost 2 | Poznámka |
|---------|------------|------------------------------|------|---------|-----|-----------|-----------|----------|
| 001     | 911274-7   | PAN HEAD SCREW M5X50         |      | 2       |     |           |           |          |
| 002     | AL00000201 | WHEEL COVER L(OUTER) CE      |      | 1       |     |           |           |          |
| 003     | AL00000003 | HEX NUT M12L                 |      | 1       |     |           |           |          |
| 004     | AL00000004 | OUTER FLANGE                 |      | 1       |     |           |           |          |
| 005     | AL00000005 | INNER FLANGE                 |      | 1       |     |           |           |          |
| 006     | 911206-4   | PAN HEAD SCREW M5X10         |      | 3       |     |           |           |          |
| 007     | AL00000203 | WHEEL COVER L(INNER)(CE)     |      | 1       |     |           |           |          |
| 008     | 911107-6   | PAN HEAD SCREW M4X8          |      | 4       |     |           |           |          |
| 009     | AL00000007 | CORD CLAMP                   |      | 1       |     |           |           |          |
| 010     | 942101-7   | SPRING WASHER 5              |      | 1       |     |           |           |          |
| 011     | 931201-8   | HEX. NUT M5                  |      | 1       |     |           |           |          |
| 012     | AL00000008 | LAMP COVER BASE              |      | 1       |     |           |           |          |
| 013     | AL00000009 | NUT                          |      | 1       |     |           |           |          |
| 014     | 911107-6   | PAN HEAD SCREW M4X8          |      | 2       |     |           |           |          |
| 015     | AL00000010 | STRAIN RELIEF                |      | 1       |     |           |           |          |
| 016     | 911118-1   | PAN HEAD SCREW M4X12         |      | 2       |     |           |           |          |
| 017     | 911156-3   | PAN HEAD SCREW M4X30         |      | 2       |     |           |           |          |
| 018     | AL00000011 | LAMP COVER                   |      | 1       |     |           |           |          |
| 019     | AL00000012 | LAMP HOLDER ASSY             |      | 1       |     |           |           |          |
| 020     | AL00000013 | BULB                         |      | 1       |     |           |           |          |
| 021     | AL00000014 | ADJUSTABLE KNOB              |      | 1       |     |           |           |          |
| 022     | 921351-7   | HEX. BOLT M6X30              |      | 1       |     |           |           |          |
| 023     | 941151-9   | FLAT WASHER 6                |      | 1       |     |           |           |          |
| 024     | AL00000015 | EYESHIELD MOUNTING ARM L     |      | 1       |     |           |           |          |
| 025     | AL00000016 | SAFETY EYE SHIELD            |      | 1       |     |           |           |          |
| 026     | 931201-8   | HEX. NUT M5                  |      | 1       |     |           |           |          |
| 027     | 942101-7   | SPRING WASHER 5              |      | 1       |     |           |           |          |
| 028     | 921212-1   | HEX. BOLT M5X12              |      | 1       |     |           |           |          |
| 029     | 942101-7   | SPRING WASHER 5              |      | 1       |     |           |           |          |
| 030     | AL00000017 | SPARK DEFLECTOR (LEFT)       |      | 1       |     |           |           |          |
| 031     | AL00000082 |                              |      | 1       |     |           |           |          |
| 032     | 941202-8   | FLAT WASHER 8                |      | 2       |     |           |           |          |
| 033     | 942101-7   | SPRING WASHER 5              |      | 1       |     |           |           |          |
| 034     | 931201-8   | HEX. NUT M5                  |      | 1       |     |           |           |          |
| 035     | 921411-5   | HEX. BOLT M8X12              |      | 2       |     |           |           |          |
| 036     | 265004-1   | PAN HEAD SCREW M5X135        |      | 4       | *   |           |           |          |
| 036-1   | AL00000113 | SCREW M5X135                 | O    | 4       |     |           |           |          |
| 037     | 941101-4   | FLAT WASHER 5                |      | 4       |     |           |           |          |
| 038     | AL00000019 | MOTOR HOUSING COVER R        |      | 1       |     |           |           |          |
| 039     | 211206-7   | BALL BEARING 6202LLB         |      | 1       |     |           |           |          |
| 040     | 951051-5   | SPRING PIN 3-8               |      | 2       |     |           |           |          |
| 041     | AL00000215 | ROTOR                        |      | 1       | *   |           |           |          |
| 041-1   | AL00000229 | ROTOR                        | S    | 1       |     |           |           |          |
| 042     | AL00000185 | STATOR                       |      | 1       | *   |           |           |          |
| 042-1   | AL00000228 | STATOR                       | S    | 1       |     |           |           |          |
| 043     | AL00000022 | BUSH                         |      | 1       |     |           |           |          |
| 044     | AL00000183 | MOTOR HOUSING                |      | 1       |     |           |           |          |
| 045     | 911113-1   | PAN HEAD SCREW M4X10 WITH WR |      | 4       |     |           |           |          |

| Položka | Číslo dílu | Popis                        | Změn | Množstv | N/O | Možnost 1 | Možnost 2 | Poznámka |
|---------|------------|------------------------------|------|---------|-----|-----------|-----------|----------|
| 046     | AL00000192 | CORD CLIP PLATE(CE)          |      | 1       |     |           |           |          |
| 047     | 911113-1   | PAN HEAD SCREW M4X10 WITH WR |      | 2       |     |           |           |          |
| 048     | AL00000152 | WIRE WITH PLUG               |      | 1       |     |           |           |          |
| 051     | AL00000026 | CORD GUARD                   |      | 3       |     |           |           |          |
| 052     | 211206-7   | BALL BEARING 6202LLB         |      | 1       |     |           |           |          |
| 053     | AL00000027 | WAVE WASHER                  |      | 1       |     |           |           |          |
| 054     | AL00000028 | MOTOR HOUSING COVER L        |      | 1       |     |           |           |          |
| 055     | 942101-7   | SPRING WASHER 5              |      | 4       |     |           |           |          |
| 056     | 931201-8   | HEX. NUT M5                  |      | 4       |     |           |           |          |
| 057     | 931402-8   | HEX. NUT M8                  |      | 1       |     |           |           |          |
| 058     | 911113-1   | PAN HEAD SCREW M4X10 WITH WR |      | 1       |     |           |           |          |
| 059     | AL00000029 | CAPACITOR CLAMP              |      | 1       |     |           |           |          |
| 060     | AL00000095 | CAPACITOR                    |      | 1       |     |           |           |          |
| 061     | 942051-6   | SPRING WASHER 4              |      | 2       |     |           |           |          |
| 062     | 931102-0   | HEX. NUT M4                  |      | 4       |     |           |           |          |
| 063     | 942051-6   | SPRING WASHER 4              |      | 2       |     |           |           |          |
| 064     | 911113-1   | PAN HEAD SCREW M4X10 WITH WR |      | 6       |     |           |           |          |
| 065     | AL00000031 | SWITCH BOARD                 |      | 1       |     |           |           |          |
| 066     | 911113-1   | PAN HEAD SCREW M4X10 WITH WR |      | 2       |     |           |           |          |
| 067     | AL00000032 | SWITCH ASSY COVER            |      | 1       | *   |           |           |          |
| 067-1   | AL00000168 | SWITCH WITH COVER            | <    | 1       |     |           |           |          |
| 068     | AL00000033 | SWITCH COVER ASSY            |      | 1       | *   |           |           |          |
| 069     | AL00000134 | TOOTHED LOCK WASHER 4        |      | 1       |     |           |           |          |
| 070     | 911113-1   | PAN HEAD SCREW M4X10 WITH WR |      | 1       |     |           |           |          |
| 072     | AL00000218 | WHEEL COVER R                |      | 1       |     |           |           |          |
| 073     | AL00000035 | HEX NUT M12                  |      | 1       |     |           |           |          |
| 074     | AL00000004 | OUTER FLANGE                 |      | 1       |     |           |           |          |
| 075     | AL00000013 | BULB                         |      | 1       |     |           |           |          |
| 076     | AL00000011 | LAMP COVER                   |      | 1       |     |           |           |          |
| 077     | 911156-3   | PAN HEAD SCREW M4X30         |      | 2       |     |           |           |          |
| 078     | 911118-1   | PAN HEAD SCREW M4X12         |      | 2       |     |           |           |          |
| 079     | AL00000010 | STRAIN RELIEF                |      | 1       |     |           |           |          |
| 080     | 911107-6   | PAN HEAD SCREW M4X8          |      | 2       |     |           |           |          |
| 081     | AL00000009 | NUT                          |      | 1       |     |           |           |          |
| 082     | AL00000008 | LAMP COVER BASE              |      | 1       |     |           |           |          |
| 083     | AL00000012 | LAMP HOLDER ASSY             |      | 1       |     |           |           |          |
| 084     | AL00000007 | CORD CLAMP                   |      | 1       |     |           |           |          |
| 085     | 911107-6   | PAN HEAD SCREW M4X8          |      | 4       |     |           |           |          |
| 086     | AL00000036 | SPARK DEFLECTOR (RIGHT)      |      | 1       |     |           |           |          |
| 087     | 942101-7   | SPRING WASHER 5              |      | 1       |     |           |           |          |
| 088     | 921212-1   | HEX. BOLT M5X12              |      | 1       |     |           |           |          |
| 089     | AL00000037 | SAFETY EYE SHIELD WITH MAG   |      | 1       |     |           |           |          |
| 090     | AL00000038 | EYESHIELD MOUNTING ARM R     |      | 1       |     |           |           |          |
| 091     | AL00000014 | ADJUSTABLE KNOB              |      | 1       |     |           |           |          |
| 092     | AL00000039 | COOLANT TRAY                 |      | 1       |     |           |           |          |
| 093     | AL00000040 | COOLANT TRAY PLATE ASSY      |      | 1       |     |           |           |          |
| 094     | AL00000041 | RUBBER SLEEVE                |      | 4       |     |           |           |          |
| 095     | 941051-3   | FLAT WASHER 4                |      | 4       |     |           |           |          |

